



MIDWAY PLAISANCE EAST END IMPROVEMENTS

COMMUNITY MEETING #3 | 6.21.22

Agenda and Purpose

1. Project Background
2. Community Feedback
3. *Midway Play!* Design Updates
4. Questions and Answers
5. Next Steps

The background is a teal-to-blue gradient. Overlaid on this are several organic, blob-like shapes. A large, bright green shape is on the left, partially overlapping a darker green shape to its right. A light blue shape is on the far right, also overlapping the green shapes. All these shapes have a dashed white outline.

PROJECT BACKGROUND

Process Summary - Memorandum of Agreement

1972: Jackson Park and Midway Plaisance added to the National Register of Historic Places

Dec 2017 - **Public Review of Jackson Park Alterations**

Nov 2020: Website: www.chicago.gov/city/en/depts/dcd/supp_info/jackson-park-improvements.html

- + 11 meetings over a 4 year period
- + Generated ideas for mitigation measures
- + Circulated a DRAFT Memorandum of Agreement to all Consulting Parties for comment
- + Reconvened to discuss proposed edits
- + Finalized the Memorandum of Agreement (MOA) document for Consulting Parties' signature

Final Memorandum of Agreement

Dec 2020: Website:

https://www.chicago.gov/content/dam/city/depts/dcd/supp_info/jackson/final_moa_signed.pdf

- + Final Document was reviewed and approved by the Federal Government (FHWA, IL SHPO, ACHP)
- + The MOA is a legally binding document

Consulting Parties = 97

1 Woodlawn
20th Ward Service Office
51st Street Business Association
5th Ward Service Office
Advisory Council on Historic Preservation (ACHP)
Blacks in Green
Brown books & Paint Brushes
Business Leadership Council
Chicago Department of Transportation
Chicago Historical Society
Chicago Lawyers' Committee for Civil Rights
Chicago Park District
Chicago Transit Authority
Chicago Urban League
City of Chicago, Office of the Mayor
Coalition for the Obama Presidential Center
Cultural Landscape Foundation
Don Nash Park Advisory Council
DuSable Museum
Emerald South
Federal Highway Administration
Federal Transit Administration
Friends of the Parks
Golden Shore
Hyde Park Academy
Hyde Park Art Center
Hyde Park Historical Society
Hyde Park-Kenwood Community Conference
Illinois Department of Agriculture, Bureau of Land and Water Resources
Illinois Department of Natural Resources
Illinois Department of Transportation
Illinois Environmental Protection Agency

Illinois Natural Resources Conservation Service
Illinois State Archaeological Survey
Illinois State Historic Preservation Office (SHPO)
Jack and Jill Moms Chicago
Jackson Park Advisory Council
Jackson Park Golf & Community Leadership Council
Jackson Park Highlands
Jackson Park Watch
Jackson Park Yacht Club
Kenwood-Oakland Community Association
KLEO Community Life Center
La Rabida Hospital
Landmarks Illinois
LISC
Local Chapter of NACWC
Metra
Midway Plaisance Advisory Council
Museum of Science and Industry
Museum Shores Yacht Club
Nation of Islam
National Association for Olmsted Parks
National Park Service
National Trust for Historic Preservation - Chicago Office
The Neighborhood Network Alliance
Network of Woodlawn
Nichols Park Advisory Council
Obama Foundation
Openlands
Preservation Chicago
Promontory Point Conservancy
Pullman National Monument Preservation Society
Real Men Charities, Inc., S. Shore Current & West of the Ryan
Magazines

Rosalie Villas Homeowners Association
Save the Midway
School of the Art Institute of Chicago
South Shore Advisory Council, South Shore Cultural Center
South Shore Chamber
South Shore Historical Society
South Shore Works
South Shore YMCA
Southern Shores Yacht Club
Southside Neighbors for Hope (SSN4H)
Southside Together Organizing for Power
Tribes - Ho Chunk Nation
Tribes - Miami Tribe of Oklahoma
Tribes - Peoria Tribe of Indians of Oklahoma
Tribes - Potawatomi – Forest County
Tribes - Potawatomi – Prairie Band
Tribes - Potawatomi-Citizen Nation
Tribes - Potawatomi-Hannahville Indian Community
Tribes - Potawatomi-Pokagon Band of Potawatomi
Tribes - Sac and Fox Nation of Missouri
Tribes - Sac and Fox Nation of Oklahoma
Tribes - Sac and Fox Tribe of the Mississippi in Iowa
U.S. Army Corps of Engineers
U.S. Department of the Interior Fish & Wildlife Service
U.S. Environmental Protection Agency
University of Chicago
Vista Garage Building Cooperative
Vista Homes
Washington Park Advisory Council
Westside Health Authority
Woodlawn Community Development Corporation
Mary Anton - Independent Consulting Party
Ray Lodato - Independent Consulting Party

Memorandum of Agreement - Mandatory Mitigation Measures

The memorandum of agreement is the result of four years of thoughtful, comprehensive discussions between project partners and consulting parties at the local, state and national level led by the Federal Highway Administration. Eight (8) Mitigation Measures are outlined in the MOA for completion.

| Category | Stipulation | | Contributing CP's |
|--------------------------------|-------------|---|----------------------------------|
| Research and Documentation | A | Updated NRHP Documentation | SHPO, Federal Agencies |
| | B | Field Documentation | |
| | C | Cultural Landscape Report | |
| Interpretation | D | Interpretive Materials | Openlands, RVHA, CLF, MPAC, SAIC |
| Rehabilitation and Restoration | E | Comfort Station | SHPO |
| | F | Statue of the Republic | |
| Design Review | G | Design Review of the Recreation Replacement at the East End of the Midway Plaisance | MPAC, SHPO, Landmarks Illinois |
| Planting Review | H | Review of Planting Plans for Required Tree Replacement | Save the Midway |

Mandatory Mitigation Measures

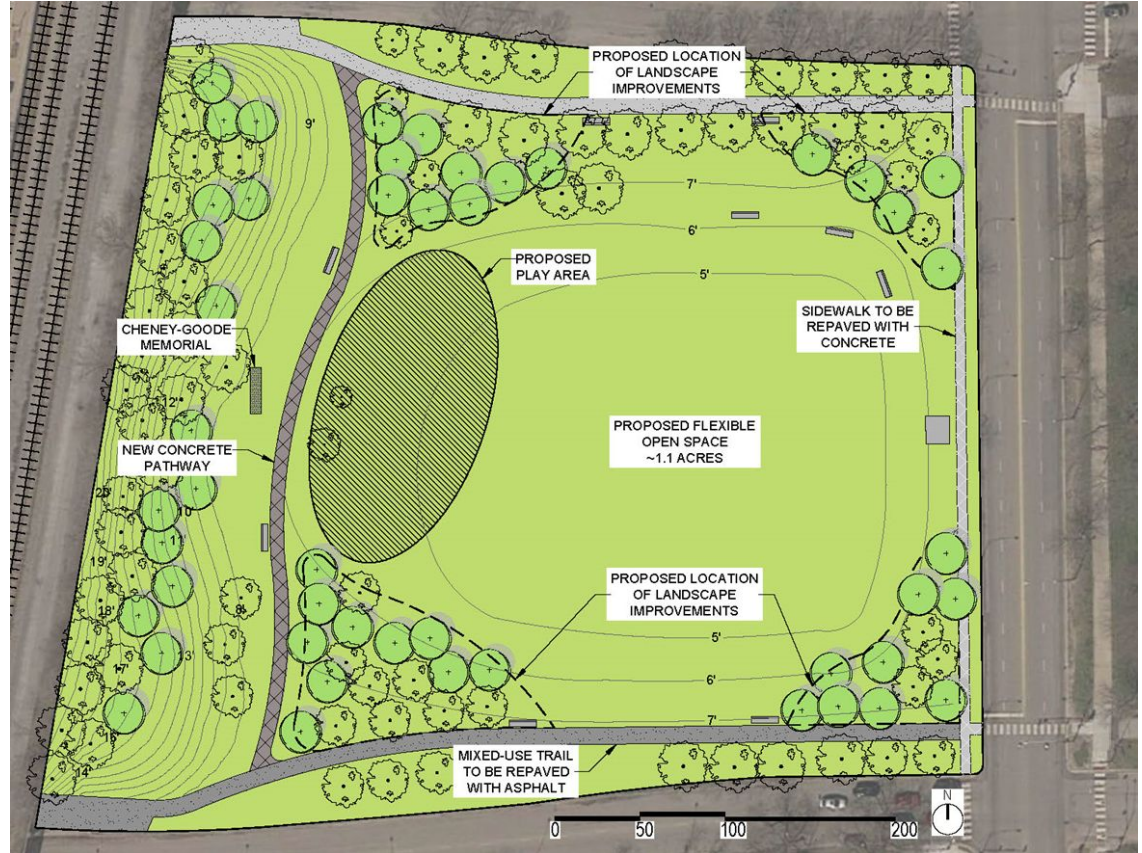
Recreation Replacement - East End of the Midway Plaisance

Stipulation G: Design Review



Project Scope: Community Engagement and Regulatory Reviews

- Community Meetings were conducted on March 29th and May 3rd and with the Midway Plaisance Park Advisory Council on May 11th.
- Community Meetings and other project updates will be provided throughout the design process.
- The City and Park District will make plans available for a **45-day consulting party review period**. This is a requirement of the MOA.
- The City and Park District will not begin construction on the eastern end of the Midway until IDOT receives **written concurrence from the Illinois SHPO** that the final design is consistent with SOI Standards for Treatment of Historic Properties, standards 9 and 10.



The background is a gradient of blue, transitioning from a lighter shade on the left to a darker shade on the right. Overlaid on this gradient are several organic, flowing shapes in various shades of blue. These shapes are outlined with dashed white lines, creating a layered, abstract effect. The text 'COMMUNITY FEEDBACK' is centered in the upper half of the image.

COMMUNITY FEEDBACK

Community Feedback - Program Elements

1. Consider
 - a. Effects on wildlife (e.g., migratory birds, coyotes, deer, frogs)
 - b. Maintenance requirements (e.g., specialized staff)
 - c. Proximity to restroom facilities
 - d. Site access and safety (e.g., vehicular drop-off area, proximity of parking areas, signalized crosswalks, pedestrian vs. vehicular routes, Metra train, fencing)
2. Maintain
 - a. Calmness and serenity of the space
 - b. North and south embankment as a hill for sledding during the winter
3. Maximize
 - a. Green space and openness of the space
 - b. Shade during summer months
4. Mitigate noise pollution (e.g., Metra tracks to the west, road on three sides, and noise emanating from the park)
5. Restore and preserve historical character-defining features (e.g., mixed-use trail, allée of shade trees, connector sidewalk, triangular ornamental plantings, Cheney-Goode Memorial Bench and Sundial, Frederick Law Olmsted, adjacent railroad)
6. Universally Accessible Play Area to consider
 - a. Ranges in abilities
 - b. Varying levels of effort
 - c. All age groups
 - d. High to low sensory spaces

Community Feedback - Material Selection

1. HARDSCAPE

- a. Minimize
 - i. Hardscape coverage / impervious surfaces (e.g., concrete)
 - ii. Use of plastic materials
- b. Maximize use of nature-based and durable materials (e.g., sand, boulders, wood, metals, plants)

2. SITE FURNISHINGS

- a. Consider
 - i. Bicycle racks
 - ii. Dark sky compliant light fixtures that complement the historical character of the Midway Plaisance
 - iii. Educational value (e.g., QR codes, signage, interactive)
 - iv. Public art installations
 - v. Trash and recycling receptacles

3. PLANTING

- a. Consider
 - i. Areas for passive recreational activities
 - ii. Native and pollinator-friendly plantings
 - iii. Rain gardens / bioretention facilities
- b. Preserve and enhance tree canopy
- c. Restore use of lawn space and practice field

Fieldwork Summary

Geotechnical Investigation

- **Duration of Work:** 3/21/2022 to 3/29/2022
- **Date Completed:** 3/29/2022
- **Services Provided:**
 - Completed (4) soil borings at 15' deep
 - Completed (3) in-situ infiltration tests
 - Performed geotechnical laboratory testing
 - Performed engineering analysis and evaluation

Survey

- **Duration of Work:** 4/4/2022 to 4/8/2022
- **Date Completed:** 4/8/2022
- **Services Provided:** Land surveying services / Documentation of topography, trees, and utility information

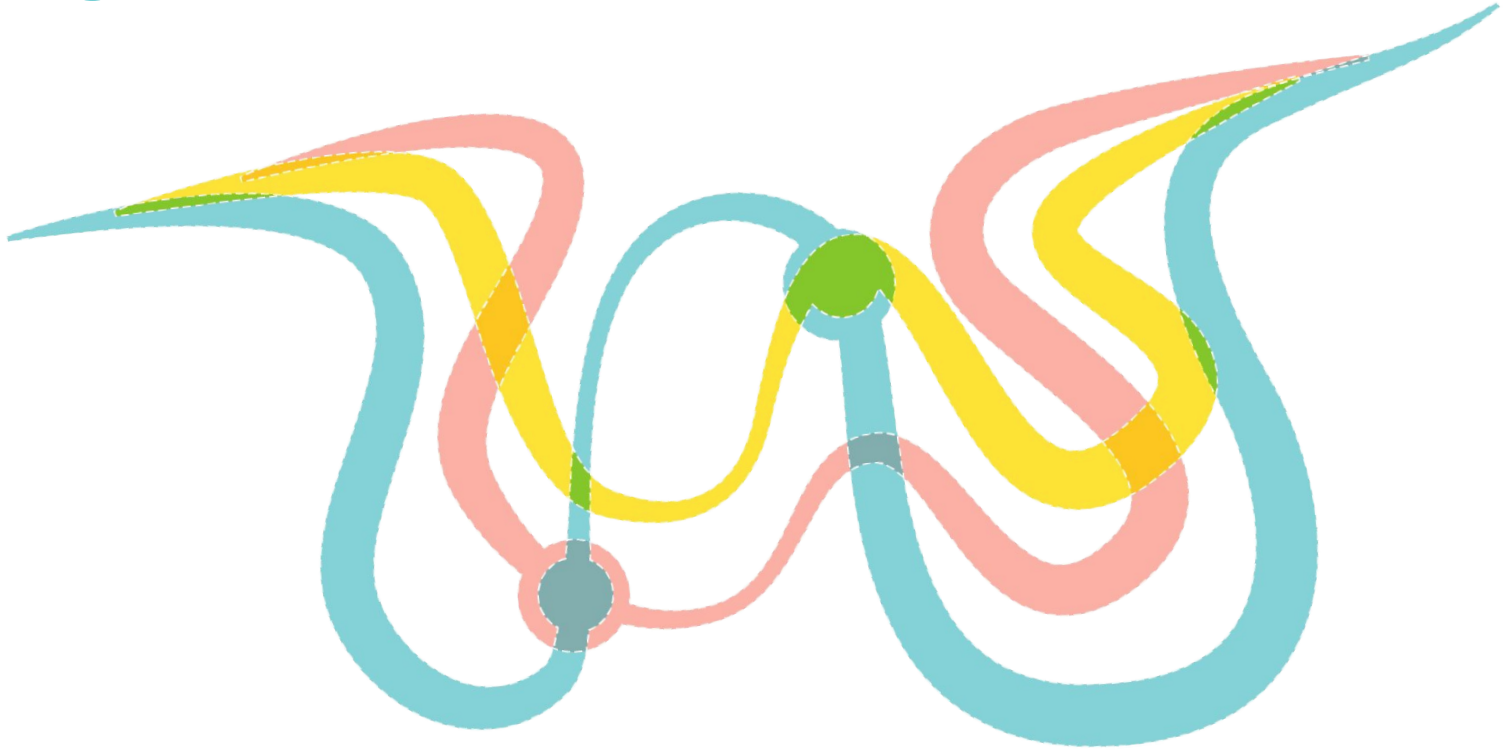
Project Milestones

- | | |
|------------------------|---|
| 1. March 29 | Community Meeting 1 |
| 2. May 3 | Community Meeting 2 |
| 3. June 21 | Community Meeting 3 (We are here!) |
| 4. Summer | 100% Design Development |
| 5. Summer | Consulting Party + Public Review Period (45-Days) |
| 6. Fall | Community Meeting #4 |
| 7. Fall | IDOT / SHPO Review Period |
| 8. Fall | Community Meeting #5 |
| 9. Winter | 100% Construction Documentation |



MIDWAY PLAY!

Design Concept



Three interwoven paths take one through a sequential play experience that can be as linear, circular, or complex as one desires.

Ribbons



■ Universally attainable

low sensory stimulus / single sensory stimulus
/ minimal physical exertion required, path for
everyone , 100% accessible path

■ Moderated challenges

some physical challenges, multi-sensory
stimuli, medium level energy

■ Acceptable risks

the most physically challenging path, highest
level of energy and movement

□ Nodes

Ribbons // Overall Plan



- | | |
|--|--|
| 1 RESTORED MIXED-USED TRAIL | 18 ROPES COURSE |
| 2 RESTORED CONNECTOR PATHWAY | 19 FLAGSTONE PATH |
| 3 NORTH HILL | 20 WATER NODE |
| 4 "SMELL" - SEATINGS WITH FRAGRANT PLANTINGS | 21 LOG BEAM NETWORK |
| 5 ACCESSIBLE SWING | 22 RUMBLE PATH |
| 6 GATHER NODE | 23 URBAN OBSTACLE COURSE |
| 7 "TASTE" - MUD KITCHEN | 24 "SOUND" - RUSTLING LEAVES WITH SUSPENDED SURFACES |
| 8 MINI FOREST MAZE | 25 MEANDERING GARDENS |
| 9 VINE TRELLIS TUNNEL | 26 "TOUCH" - LOOSE PARTS PLAY |
| 10 BAREFOOT SENSORY PATH | 27 HIDDEN TREE STUMP PATH |
| 11 TREE TOP ADVENTURE COURSE | 28 "SIGHT" - BUTTERFLY GARDEN |
| 12 MUSIC NODE | 29 TACTILE SENSORY WALLS |
| 13 RESTORED CHENEY GOODE MEMORIAL | 30 SOUTH HILL |
| 14 OUTLOOK | 31 RESTORED ORNAMENTAL PLANTING |
| 15 SHADE STRUCTURE | 32 SITE FENCING |
| 16 VARIOUS SLIDES | 33 CENTRAL LAWN SPACE |
| 17 CLIMBING WALL | 34 EXISTING BOULEVARD SIGNAGE TO REMAIN |
| | 35 RESTORED SIDEWALK |

0'-0" 80'-0" 160'-0"



Restored Mixed Use Trail



Restored Connector Pathway



Sensory “Smell” - Fragrant Plants and Seating

Universally Accessible



PRAIRIE DROPSEED SMELLS LIKE POPCORN AND LAVENDER IS A CLASSIC FAVORITE!

Accessible Swing

Universally Attainable



Gather Node

Universally Attainable



Sensory “Taste” - Play Kitchen

Universally Attainable



Child-Scaled Forest Maze



Acceptable Risks



Vine-Trellis Arbor Walkway

Universally Attainable





Tree-Top Adventure Course



Acceptable Risks

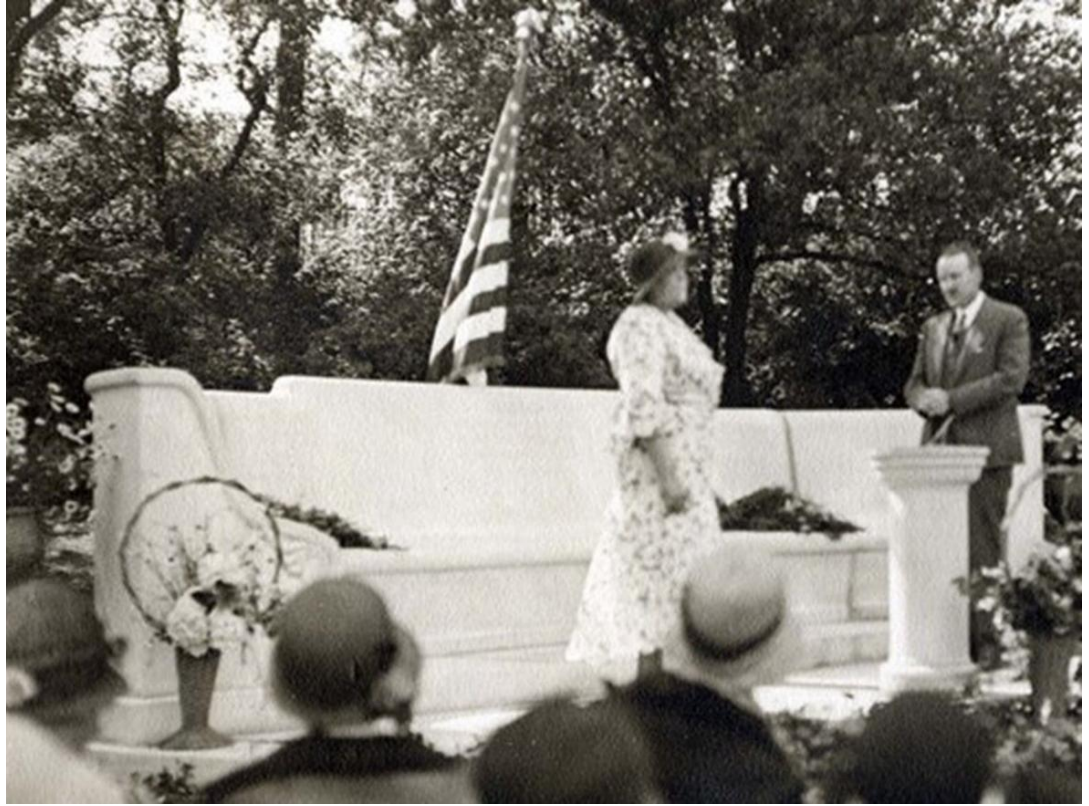


Music Node

Universally Attainable



Restored Cheney Goode Memorial



Overlook

Universally Accessible



Shade Structure



Universally Accessible



Embankment Slide on Slope



Moderated Challenges



WILL PROVIDE TRANSFER PLATFORMS AT TOP AND BOTTOM

Climbing Wall



Moderated Challenges



Ropes Course

Acceptable Risks



Flagstone Path



Moderated Challenges



Water Node

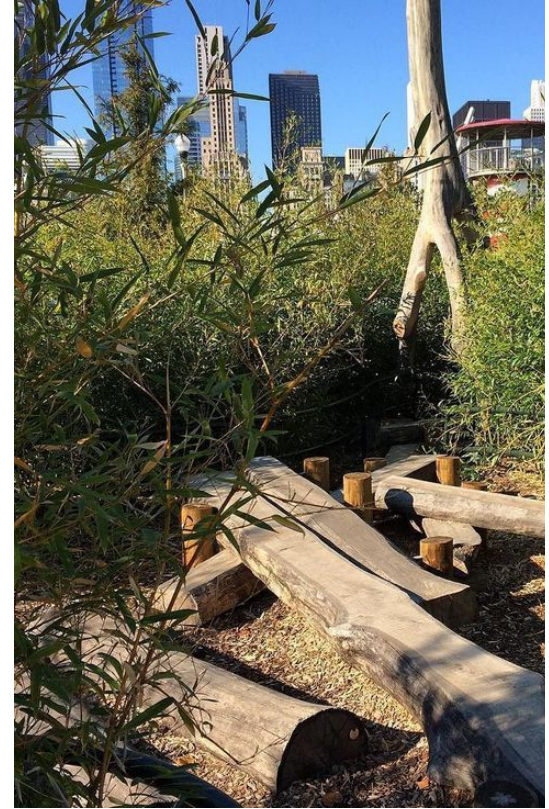
Universally Attainable



Log Beam Network



Acceptable Risks



Rumble Path

Moderated Challenges



Urban Obstacle Course

Acceptable Risks



Sensory “Sound“- Rustling Leaves With Swaying Surfaces

Universally Attainable



Meandering Therapeutic Gardens

Universally Attainable



Sensory - “Touch“- Loose Parts Play

Universally Attainable



Hidden Stump Path



Moderated Challenges



Sensory“Sight“- Butterfly Garden

Universally Attainable



Tactile Sensory Walls

Universally Attainable



Restored Ornamental Planting

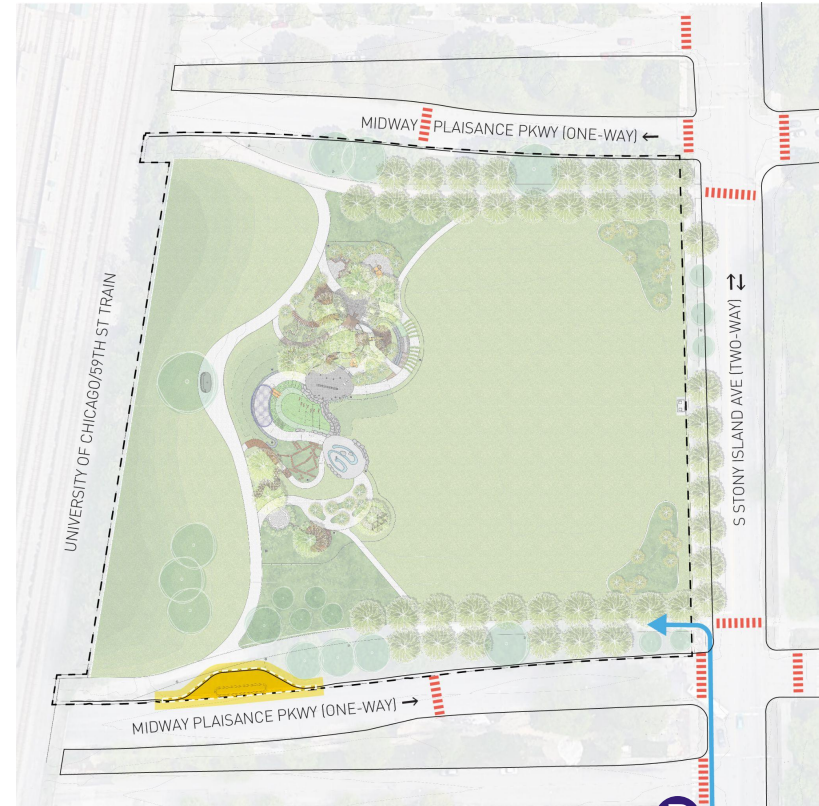


Central Lawn Space



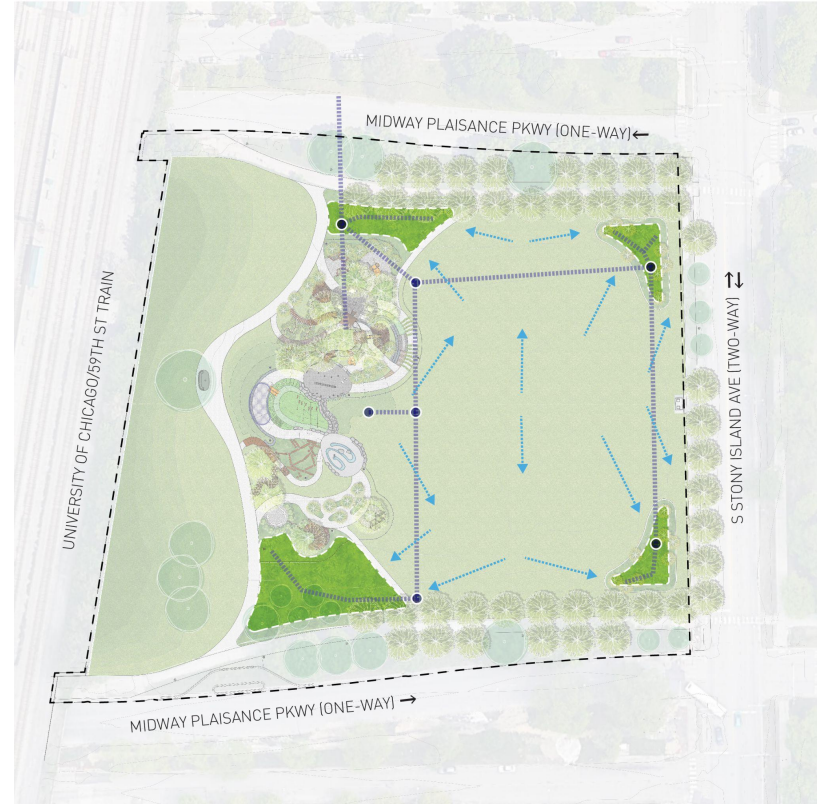
Safety and Access Diagram

1. Ongoing coordination with CDOT to provide an accessible vehicular drop-off at the connector path.
2. Ongoing coordination with CDOT to provide safe and accessible crosswalks with adequate signal timing.
3. Explore the addition of midblock crossings.
4. Coordinate access and accessible parking at the Public Parking Lot to the south at 60th and Stony Island.
5. Explore accessible on-street parking along the Midway Plaisance.



Stormwater Management Approach

1. Respect historic topography within the park space.
2. Maximize usable lawn space, min 30x50 yards.
3. “Crown” the lawn space and direct stormwater to the corners.
4. Include stormwater infiltration areas and native plantings in low areas to collect and infiltrate stormwater runoff before it enters the sewer system.
5. Include perforated storm sewer piping to collect and infiltrate stormwater.
6. Meet all City of Chicago Stormwater Ordinance requirements for rate (detention) control and volume (retention) control.



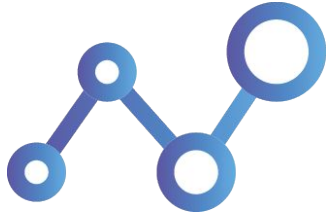


The image features a teal background with two overlapping organic shapes. The left shape is a vibrant green, and the right shape is a lighter, muted blue. Both shapes are outlined with a dashed white line. The text 'Q+A' is centered over the green shape.

Q+A

Your Feedback

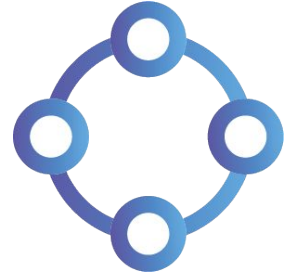
How do we plan to use your feedback from the questions we're asking?



We will incorporate the feedback into the data gathering process.



We will incorporate feedback into the concept design process.

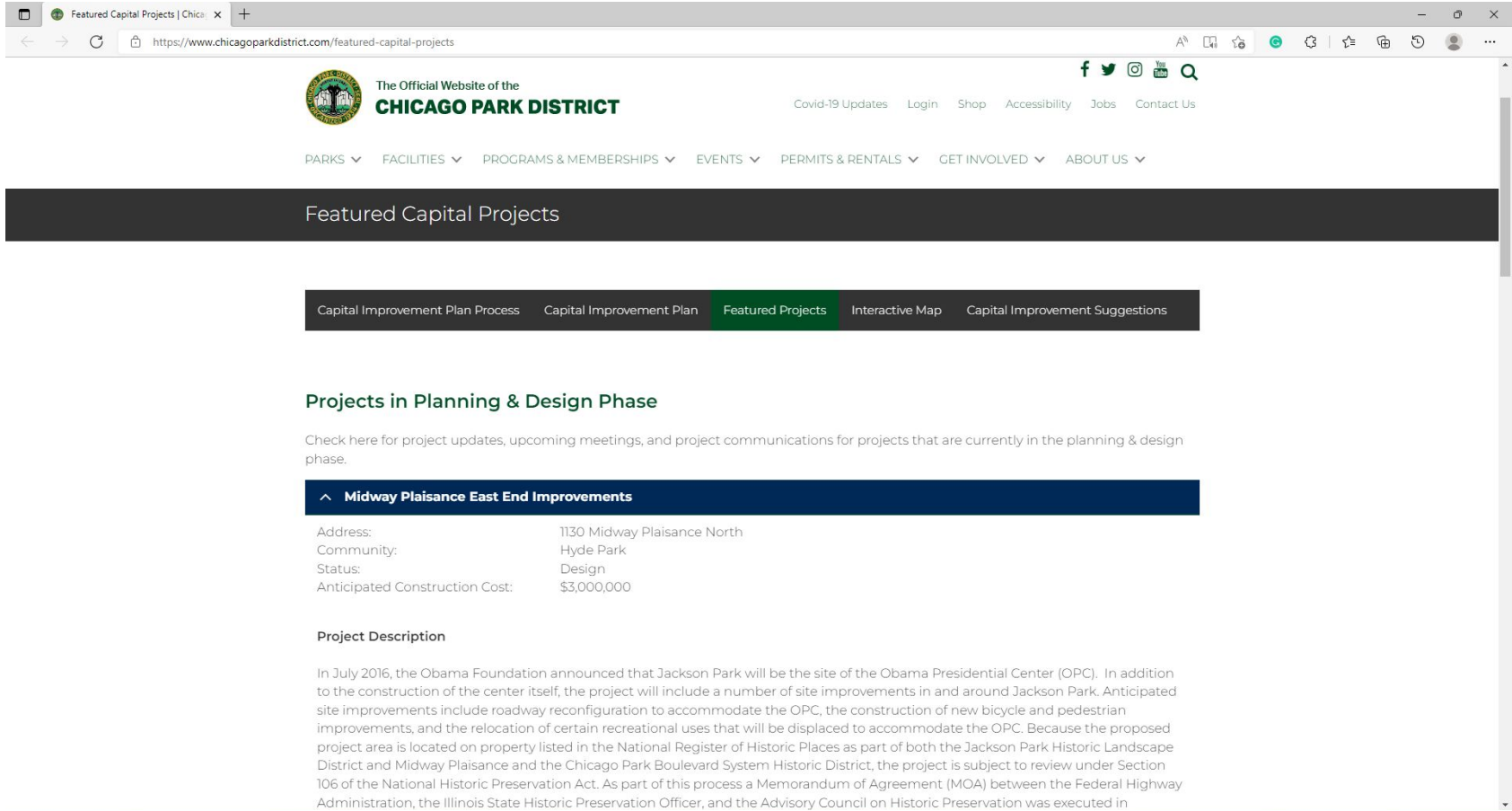


We will use the information provided to evaluate our engagement process.

The background is a solid light blue. On the right side, there are several overlapping organic shapes in various shades of blue, from light to dark. These shapes are outlined with dashed white lines. The text 'NEXT STEPS' is centered horizontally and partially overlaps these shapes.

NEXT STEPS


Featured Capital Projects Website



Capital Project Feedback Online Form

Capital Project Feedback Form f x +

https://www.chicagoparkdistrict.com/Midway-Plaisance-East-End-Improvements-Feedback-Form

 The Official Website of the
CHICAGO PARK DISTRICT

[Covid-19 Updates](#) [Login](#) [Shop](#) [Accessibility](#) [Jobs](#) [Contact Us](#)

[PARKS](#) [FACILITIES](#) [PROGRAMS & MEMBERSHIPS](#) [EVENTS](#) [PERMITS & RENTALS](#) [GET INVOLVED](#) [ABOUT US](#)

Capital Project Feedback Form for Midway Plaisance East End Improvements

First Name

Last Name


Email

Zip Code*

Comments*

SUBMIT

(312) 742-PLAY (7529)
TTY: (312) 747-2001

 City of Chicago
Lori E. Lightfoot, Mayor

541 N. Fairbanks

STAY INFORMED
Join a Newsletter

FOLLOW US

Next Steps

January - March
2022:

- + Design Start: Q1 2022
- + Community Meeting #1: Q1 2022*

April - June
2022:

- + Community Meeting #2: May 3, 2022
- + **Community Meeting #3: June 21, 2022**

July - September
2022:

- + Consulting Party Review: July - September 2022

October 2022 -
December 2023:

- + Community Meeting #4: Q4 2022*
- + SHPO Review: Q4 2022*
- + Community Meeting #5: Q4 2022
- + Permitting and Bidding: Q4 2022
- + Construction Start: Q1 2023
- + Construction Complete: Q4 2023

**MOA requires input on draft design from the public, signatories, invited signatories and concurring parties, and public input on the play area features to be completed by 2022*



THANK YOU!